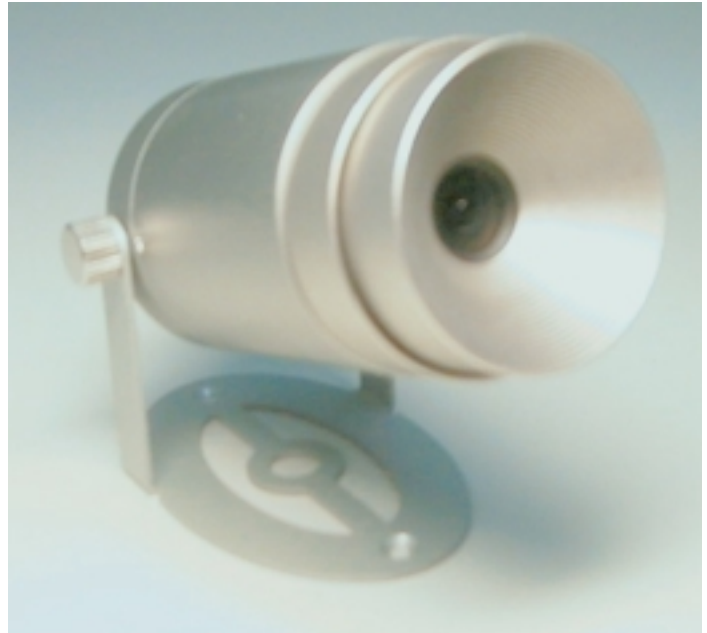


YOKO 161

Extra MINI Color CCD Camera

- Built in 3.7mm pin hole lens.
- 330 TV lines 290,000 Pixels,5 Lux.
- FCC approval,CE under processing



YOKO 161 Extra MINI Color CCD Camera:

Type Standard	NTSC/PAL			
Pick Up Elements	1/4 DSP Color CCD Sensor			
Frequency Deviation	0 °C ~ 40 °C		± 200	KHz
Mating area	NTSC = 3.61 mm (H) x 2.72 mm (V)			
	PAL = 3.61 mm (H) x 2.70 mm (V)			
Horizontal scanning frequency	NTSC		15.734	KHz
	PAL		15.625	KHz
Vertical scanning frequency	NTSC		59.94	KHz
	PAL		50.00	KHz
Resolution	Horizontal	330		Lines
	Vertical lines	350		Lines
S/N ratio	With AGC OFF		46	dB
Minimum Illumination	10 lx (at F2.8), 5 lx (at F2.0)			
Built in	Condenser MIC			
Power Source	9V		140	mA

YOKOJIMA PERIPHERAL INDUSTRIAL CO., LTD.
6F. NO.15 ,LN.131,HANG CHOW SOUTH ROAD,SEC 1 TAIPEI
TAIWAN,R.O.C
TEL886-2-2321-4118 FAX:886-2-2391-0073
E-mail:yokojima@ms8.hinet.net

YOKO 161

Extra MINI Color CCD Camera

Operating Temperature		+5		+35	°C
Operating Humidity		5		85	%
DP			5		%
DG			5		°
Dimensions	68mm*36mm*36mm				
Weight			91		g
Power Consumption	9V		200		mA

! Weight and dimensions shown are approximate.

! Specifications are subject to change without notice

YOKOJIMA PERIPHERAL INDUSTRIAL CO., LTD.
6F. NO.15 ,LN.131,HANG CHOW SOUTH ROAD,SEC 1 TAIPEI
TAIWAN,R.O.C
TEL886-2-2321-4118 FAX:886-2-2391-0073
E-mail:yokojima@ms8.hinet.net

YOKO 161
PAGE : - 2 -